

Haliburton Highlands Health Services Future of Care Forum #2: The Future of Long-Term Care



This session is being recorded.



Traditional Land Acknowledgement

We gather on ancestral lands, the traditional territory of the Mississauga Anishinaabe and the traditional unceded territory of the Algonquin Anishinaabe people and in the territory covered by the Williams Treaties which have been inhabited for thousands of years – as territories for hunting, fishing, gathering and growing food. The intent and spirit of the treaties that form the legal basis of Canada bind us to share the land “for as long as the sun shines, the grass grows and the rivers flow.”



Help Shape the Future of Healthcare in our Community!

We are hosting a **Future of Care Forum** Town Hall series at our Minden site auditorium and virtually, where the community is invited to learn more about these plans and ask their important questions.

FORUM #1



What's on the Go at HHHS

February 19, 2025
6 pm to 7:30 pm

FORUM #2



The Future of Long-Term Care

March 5, 2025
6 pm to 8 pm

FORUM #3

The Future of Acute Care

March 26, 2025
6 pm to 8 pm



Learn more and RSVP at www.hhhs.ca/Master-Planning
or scan the QR code



The Goal for Tonight's Meeting

HHHS is working on a proposal to expand access to long-term care (LTC) in the County of Haliburton via an LTC Master Plan. We anticipate that this proposal will be submitted to Ontario's Ministry of Long-Term Care by the end of March.



To make sure this proposal reflects the needs of our community, our goal tonight is to **hear directly from you** to incorporate your ideas and input in this proposal.



Housekeeping Items

Washrooms are located just outside the hall.

There are **fire exits** on either side of the stage.

Please put your **phone on vibrate**.

We have **reserved seats** close to the speakers for those with hearing impairments.



Housekeeping Items

Be respectful, even when opinions differ.
Disrespectful behaviour will not be tolerated.

Stay on topic.

If off-topic issues arise, they will be noted for future discussions.

Balance participation.

The moderator will rotate speakers to ensure all voices are heard.



Meeting Agenda

#1 Welcome & Introductions 6:00 – 6:15 pm



#2 LTC in Haliburton County 6:15 – 6:25 pm

#3 The Draft LTC Master Plan 6:25 – 7:00 pm

#4 Community Input 7:00 – 7:55 pm

#5 Closing Remarks 7:55 – 8:00 pm



The Long-Term Care Home Landscape



HHHS: Providing High-Quality Services

Hospital

Emergency
15 Acute Care Beds
Diagnostic Imaging
Point of Care Lab
Physiotherapy
Occupational Therapy



Community Support Services

Adult Day Program
Diabetes Education
Friendly Visiting
Security Checks
Geriatric Assessment
Meals on Wheels
Medical Transportation
Mental Health & Addictions Services
Palliative Care Community Team
Supportive Housing
Assisted Living

Long-Term Care

Highland Wood
Hyland Crest





LTC Homes in Haliburton County



Highland Wood
30 beds
Haliburton



Hyland Crest
62 beds
Minden

Extendicare

Extendicare
Haliburton
44 beds
Haliburton





Care at Highland Wood & Hyland Crest



| Number of: | Highland Wood | Hyland Crest |
|------------|---------------|--------------|
| Staff | 50 | 81 |
| Positions | 62 | 91 |
| Vacancies | 12 | 10 |

www.hhhs.ca/about/careers





Care at Highland Wood & Hyland Crest



Puppy & Horse Visits





Care at Highland Wood & Hyland Crest

Deer Hunting





Care at Highland Wood & Hyland Crest





Care at Highland Wood & Hyland Crest



On-site Services:

Stylist

Foot Care

Physiotherapy

Dietician





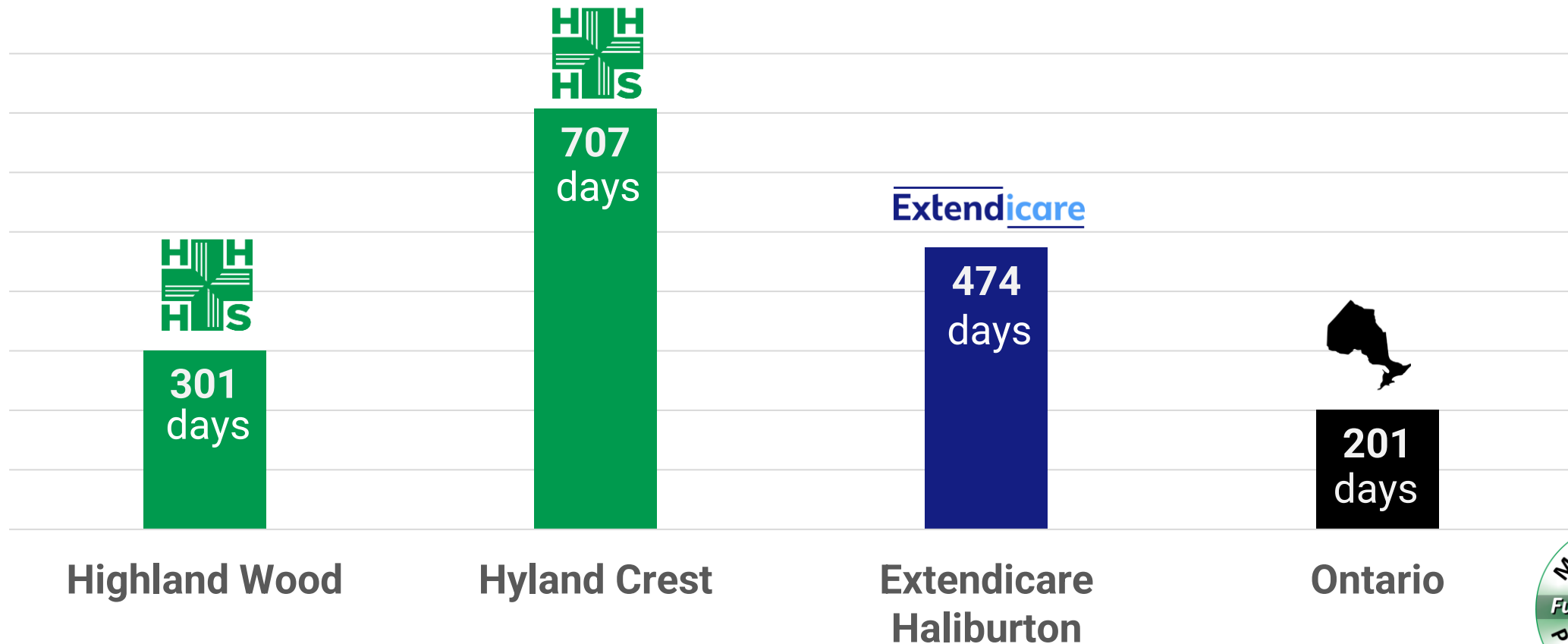
**So, why are we focused on a
Long-Term Care Home
Master Plan?**





Long-Term Care Waitlists

The median number of days people waited to move into a long-term care home from the community in 2022/23.



A Growing and Aging Community



The population in HHHS' catchment area is expected to **increase by 22%** in the next 20 years



The 80+ population is expected to **grow by 59%** in the next decade



This demographic shift brings opportunities to improve access to long-term care across the County of Haliburton.

Source: 2022 Ministry of Finance data as required by Ministry of Health





What is an LTC Master Plan?

LTC Master Planning defines the **high-level priorities, specific goals, and vision** for the future of long-term care in the Haliburton County



Is it Different than a Hospital Master Plan?

Yes, the plans are different. Mandated by Ontario's Ministry of Health, Hospital Master Planning is a process that assesses the adequacy of facilities, ensuring spaces meet the needs of our community both today and tomorrow. This involves planning for mid-term (5 to 10 years) and long-term (15, 20, and 30 years) needs.





What is included in a LTC Master Plan?

Legislated Requirements

- Building and construction guidelines
- Size of resident rooms
- Private and semi-private rooms
- Wheelchair accessibility
- Adequate administrative offices, storage areas, and staff spaces

vs.

Room for Flexibility

- Design elements depending on the Home's location
- Intergenerational care
- Addition of retirement spaces
- Residences for staff
- Innovative models of care
- Re-imagined space for our dementia population





LTC Master Planning Key Dates

- **Development of the LTC Master Plan with the community**
- Plan to be submitted to the Ministry of Long-Term Care (*End of March 2025*)
- Ministry of Long-Term Care review
- Ministry of Long-Term Care approval (*Estimated 12 to 18 months*)
- HHHS retains design teams to create the plans
- HHHS' community consulted on the draft design plans
- Final plans refined
- Construction begins (*Estimated 18 to 24 months*)

CURRENT STATE



Our Commitment to Residents & Families

We understand these initial plans may raise questions about its impact on residents, potential disruptions from construction, and how we'll ensure continued care, comfort, and safety.

What You Can Expect from Us

- **Early and Transparent Communication:** These changes are years away, and planning is still in its very early stages.
- **Collaboration with Residents and Families:** You will be key partners, consulted at major stages of the project. Plans and decisions will be shared openly before they happen.
- **Resident Well-Being is Our Priority:** We will work together to minimize disruptions and ensure daily activities and routines are not impacted.



The Draft LTC Master Plan





The Draft Long-Term Care Master Plan

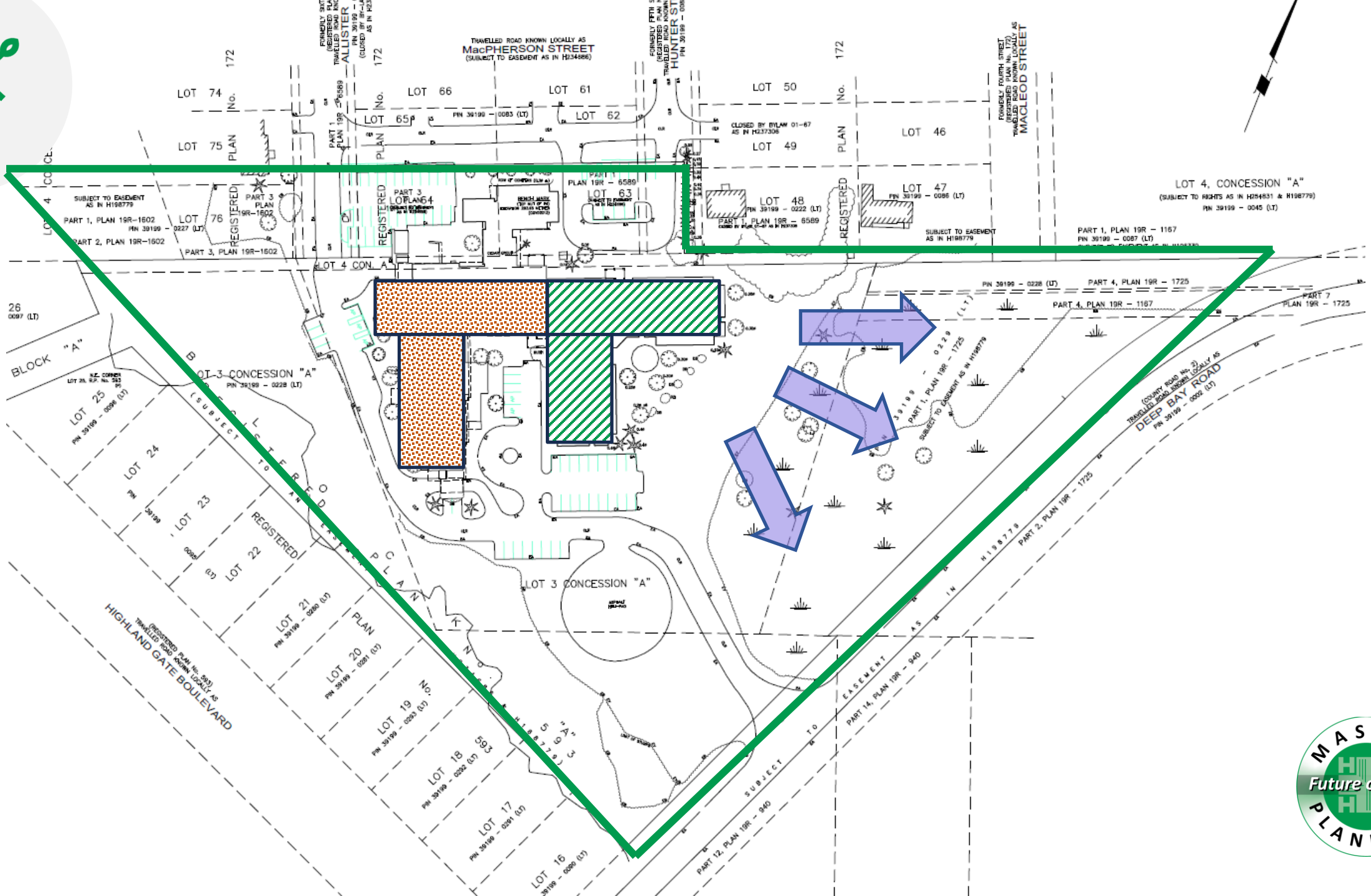
Increase long-term care capacity to **add an additional 68 new beds to the County of Haliburton**, bringing the total to a minimum of 160 long-term care beds in one location.

Modernized care with **innovative spaces** that support resident needs, including behavioral challenges, without using locked units

Services, teams, and administration would all be streamlined together under **one larger roof**

A care environment that **feels like home**, centered on residents' comfort, preferences, and individuality







Quality Resident-Centred Care





Long-Term Care Home Models

We hope you had a chance to review some of the materials we shared ahead of time.

Village

Includes retirement homes, long-term care homes, daycare, retail

- Schlegel Villages
- Providence, BC
- De Hogeweyk Dementia Village

Green Care Farm

Integrates farming activities with dementia care

- Milton Green Care Farm
- Meaford Green Care Farm
 - Netherlands

Small Care Home

Co-locates households in a larger building like neighbourhoods

- Seaton LTC, Pickering
- Tideview Terrace, NS
- MacGillivray Guest Home LTC, NS



Safe Long-Term Care Act Engagement Report

Principle 2: Meaningful quality of life: supports holistic care and accommodations that value the respect, autonomy, dignity, personal goals, and individuality of residents and is focused on overall wellness.

Government of Canada, 2024. Accessed from: <https://www.canada.ca/en/health-canada/services/publications/health-system-services/engagement-what-we-heard-report.html>





For Example: Green Care Farms

- Green care farms provide small-scale, homelike care environments, integrating farming activities with dementia care
- These farms emphasize personalized, meaningful activities, supporting residents' autonomy and well-being
- They offer an alternative to traditional nursing homes, promoting social engagement and independence





What does this look like?

More Home-Like

More attention for **LIVING** rather than care/cure

- Wellbeing/quality of life
- Feeling at home
- Family involvement/partnership

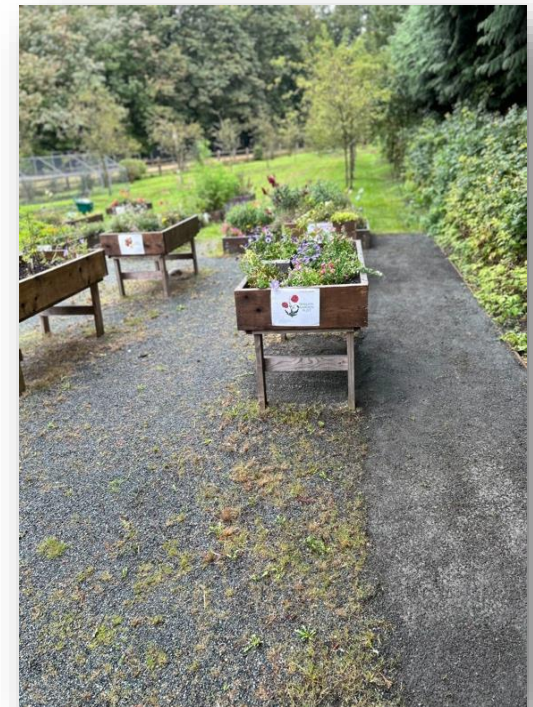
- ✓ Emphasis on physical environment
- ✓ Smaller groups, home-like environments





Focus on Outdoor Activities

- Create easy access to outdoors to promote nature-based care
- Walking paths where you feel free to explore and not 'locked in' using landscaping for boundaries around paths
- Provide opportunity for meaningful person-centered activities





Don't Build an Institution, Build a Home

The care environment impacts the daily life and functioning of older people, especially people with dementia.





Exploring Innovative Models

McMaster University will host a delegation from HHHS in early April for a visit to the Netherlands, where they will explore innovative long-term care models that have shown **positive outcomes in other countries.**

McMaster
University





Sustainability Requirements

Getting to Net-Zero

- Optimize heating systems
- Design efficient high-performance building



<https://peach.healthsci.mcmaster.ca/wp-content/uploads/2024/04/Sustainable-Healthcare-Leaders-Guidebook-for-Canadian-Long-Term-Care-with-ref.pdf>





Improved Infection Prevention & Control Measures

To Build Resiliency:

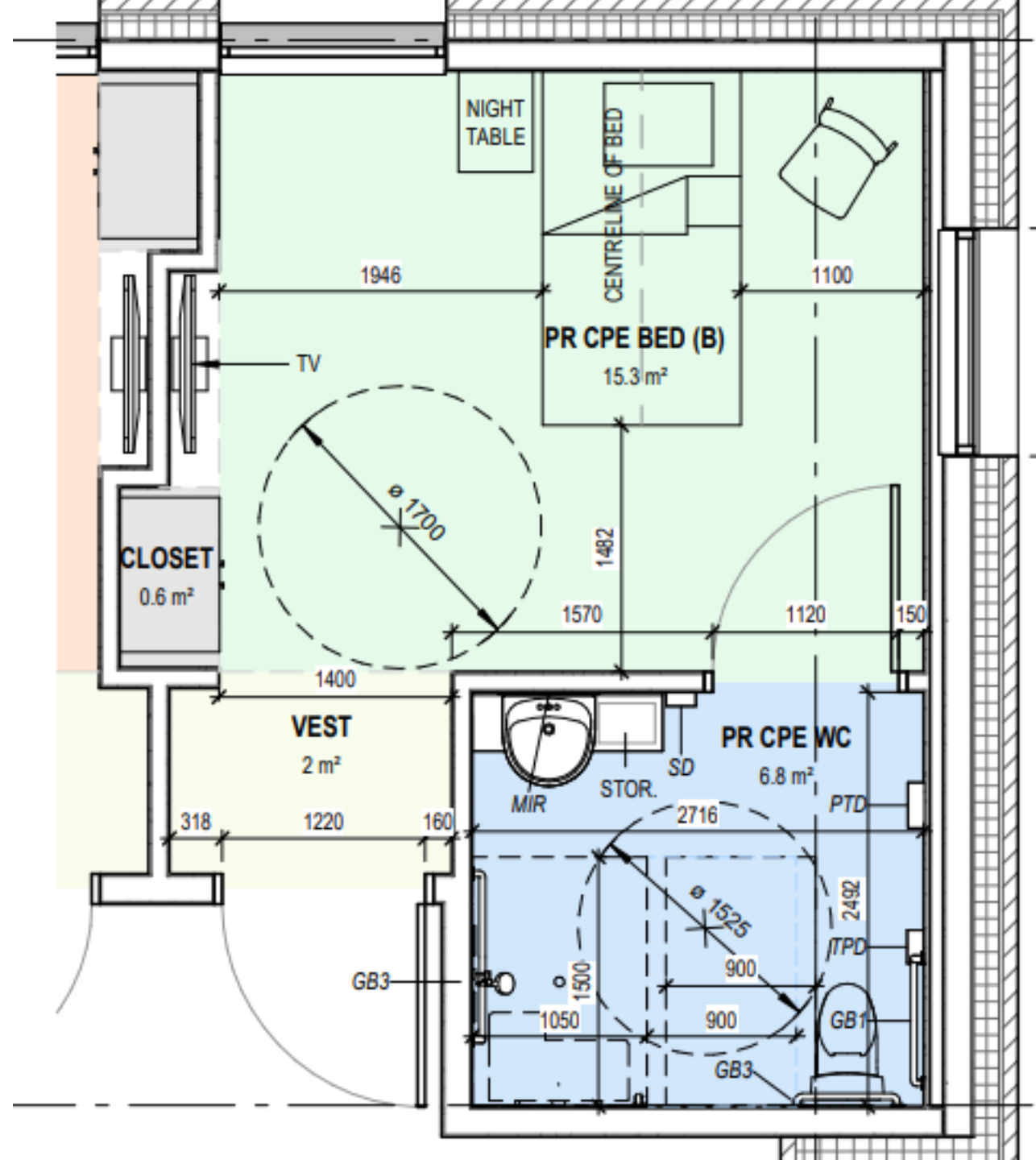
- ✓ Smaller Home Areas
- ✓ Private Rooms
- ✓ Doorless Washrooms
- ✓ Digital Displays
- ✓ Touchless Elevator





Resident Rooms

- Mix of private & semi-private
- More usable floor space





Intergenerational Care in Rural Communities

“As rural communities consider innovative ways to meet their aging population and encourage the retention of young families, intergenerational care facilities may need to be an option.”

<https://www.communitypsychology.com/intergenerational-care-programs/>





Focus on Quality of Life





Focus on Quality of Life





The Benefits of “One Larger Roof”

To advance the Hospital Master Plan, new inpatient beds and programs will potentially expand into the footprint currently occupied by Highland Wood Long-Term Care in Haliburton. Hyland Crest in Minden would then be expanded and modernized, bringing services, teams, and administration together under one larger roof.

- ✓ More efficient use of staff, equipment, and services
- ✓ Ability to invest in specialized services or high-quality staff
- ✓ Easier to implement policies, training, and compliance



Community Input



We Want to Hear From You!

Your input will help co-design our **long-term care home** that meets the needs of our community.

What are the most important features or services that should be prioritized in the new, larger home?





Let's continue the conversation!

If you know of other stakeholders or community members whose input you believe would be valuable, please email

MasterPlanning@hhhs.ca



Help Shape the Future of Healthcare in our Community!

We are hosting a **Future of Care Forum** Town Hall series at our Minden site auditorium and virtually, where the community is invited to learn more about these plans and ask their important questions.

FORUM #1



What's on the Go at HHHS

February 19, 2025
6 pm to 7:30 pm

FORUM #2



The Future of Long-Term Care

March 5, 2025
6 pm to 8 pm

FORUM #3

The Future of Acute Care

March 26, 2025
6 pm to 8 pm



bitly

Learn more: www.hhhs.ca/Master-Planning
Share your input: MasterPlanning@hhhs.ca

